



Color imageCLASS

MF820Cdn / MF810Cdn

Color Laser Multifunction Printers

PRINT | SCAN | COPY | FAX

Revolutionizing Today's Workspace

- Seamlessly navigate through features with the first imageCLASS color **3.5" customizable touch-panel LCD**
- Achieve vibrant and vivid images with the introduction of **V² Color Technology**
- Boost productivity with **blazing fast** double-sided print and copy speeds!
Up to **36 pages per minute** (MF820Cdn)*
Up to **26 pages per minute** (MF810Cdn)*
- **Revolutionary Insulated Air Pressure** toner technology helps control toner flow for stable toner supply and improved operability
- **Standard high-capacity**, 550-sheet cassette plus 100-sheet Multipurpose Tray**
- **Limit interruptions** with up to three additional 550-sheet cassettes (Allows up to 2,300 sheets)**
- Efficient Energy Saver® mode uses approximately **1.0 W** in Sleep mode
- **Print, Scan, Go⁺** with **Apple® AirPrint⁺** and **Mopria™ Print Service⁺⁺**
- **Scan and Search** your documents with **Optical Character Recognition (OCR)** PDF scanning*



Advanced Technologies for Your Home and Office

Image Quality

High-quality printing is possible and images can be output with sharp, vibrant colors thanks to V² (Vivid and Vibrant) Technology.



V² COLOR

Sharpness control has also been adopted with the new MF800 Series to enable the output of sharp images.

Paper Handling

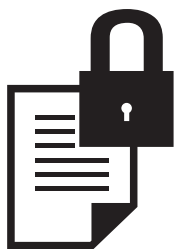
This series offers several ergonomic options to allow ease of use:

- Closing assist mechanism for smooth drawer closure;
- Cut out handles with universal design guidelines to support all users; and
- Size guides that can be easily adjusted with a single finger.



Secure Print

This series features Secure Print to help protect the privacy of your printed documents. To help ensure that your documents end up in the right hands, follow the simple steps below:



1. Enter the code on PC.
2. Select the touch-screen "Secure Print" button on the MF820Cdn/MF810Cdn.
3. Select the document name in Secure Print Mode.
4. Enter the code on the MF820Cdn/MF810Cdn.
5. Pick up the secure print from the output tray.

* Print speeds are based on internal testing. Print and copy speeds may vary depending on the number of copies selected as well as the settings for size, type, and orientation of paper.

** Based on 20 lb. Bond Paper.

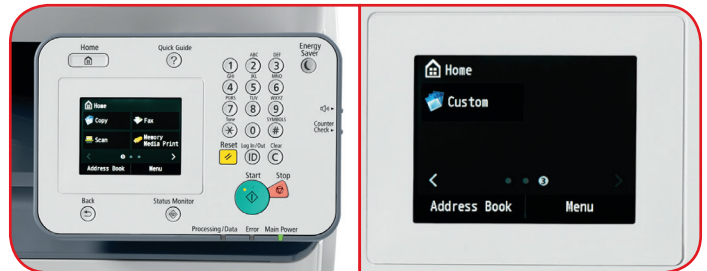
† Mobile printing capabilities will require MF800 Series product to be attached to a wireless router. Wireless printing requires a working Ethernet network with wireless 802.11b/g or n capability. Wireless performance may vary based on terrain and distance between printer and wireless network clients.

Color Touch-Panel



Touch-Panel

The color touch-panel allows for simple navigation through each feature available on your MF820Cdn/MF810Cdn MFPs. You can also customize your home screen and create new buttons per user preference needs.

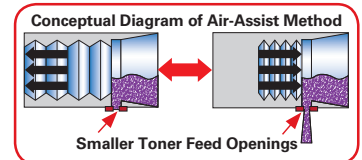


Tiltable Control Panel

Tilting control panel gives you the ability to see and navigate through the features from different angles to best fit your needs.

Insulated Air Pressure (IAP) Toner Technology

The MF800 Series toner bottle offers a small toner feed opening and an air pressure feed mechanism to allow for more control of toner flow.



Generation Green

The MF800 Series is part of Canon U.S.A.'s Generation Green Program, which highlights the company's commitment to sustainability.



Features such as Eco-Copy, which allows users to combine several pages onto just one page, and Energy Saving Mode, which lowers the amount of energy being used, help to make the MF800 Series more environmentally conscious. Learn more at www.usa.canon.com/green.

+ AirPrint functionality requires an iPad, iPad Mini, iPad 2, the new iPad, iPhone 3GS or later, or iPod touch 3rd generation or later device running iOS 4.2 or later, and an AirPrint-enabled printer connected to the same network as your iOS device. A printer connected to the USB port of your Mac, PC, AirPort Base Station, or Time Capsule is not supported.

†† Mopria Print Service, available for free at the Google Play Store, requires a compatible Android KitKat 4.4 smartphone or tablet. The printer must be either wirelessly connected to the network router or with an Ethernet cable. The mobile device and printer must be connected to the same network.

• Scanning with MF800 Series requires TWAIN compliant software scan utility.

FEATURES	Color imageCLASS MF820Cdn	Color imageCLASS MF810Cdn
	BASIC SPECIFICATIONS	
Functions	Print, Scan, Copy, Fax	
Print Speeds (default print mode: two-sided)	Up to 36 ppm (plain paper, Letter)*	Up to 26 ppm (plain paper, Letter)*
Connectivity	USB Device 2.0 High-Speed, 10/100/1000 Base-T Ethernet	
Operating Systems	Windows® 8.1, Windows 8, Windows 7, Windows Server® 2012, Windows Server 2008 R2, Windows Server 2008, Windows Vista®, Windows Server 2003, Mac® OS X 10.5.8 and up, Linux® Drivers for print only, available for download at www.usa.canon.com	
Paper Handling	Duplex Automatic Document Feeder: 50 Pages**	
	Standard Cassette: 550-sheet; 16 lb. to 58 lb. Bond; A4, B5, A5, LGL, LTR, STMT, EXE	
	Multipurpose Tray: 100-Sheet; 16 lb. to 58 lb. Bond	
	Platen Size: 8.5" x 14"	
	ADF Size: 8.5" x 14"	
	Output Tray: 250-Sheets (Face-down)	
Duplex	All Mode (Print, Copy, Scan, Fax)	
Duty Cycle	Up to 88,000 Pages Per Month	Up to 67,000 Pages Per Month
Recommended Print Volume	1,000-5,000 Pages Per Month	
Security	IP Address Filtering, MAC Address Filtering, Native Secured Print, IEEE802.1x, SNMPv3, HTTPS, IPSEC	
	PRINTER SPECIFICATIONS	
First-Print Time	Approximately 9 Seconds (Letter)***	
Printer Language	UFR II, PCL6 (5c,XL), PostScript® 3™, PDF	
Print Resolution	Up to 600 x 600 dpi (2400 dpi equivalent x 600 dpi quality when using Image Refinement Technology)	
Print Features	Poster, Booklet, Watermark, Page Composer, Toner Saver	
Print Memory	1 GB (Shared with Copy Memory)	
Mobile Print	Apple AirPrint, Canon Mobile Printing (for iOS and Android), Mopria Print Service	
	COPIER SPECIFICATIONS	
First-Copy Time	Approximately 6 Seconds (Letter)†	
Copy Resolution	Up to 600 x 600 dpi	
Halftones	256 Levels	
Max. Number of Copies	999 Copies	
Copy Features	Frame Erase, Memory Sort, 2-on-1, 4-on-1, ID Card Copy	
	SCANNER SPECIFICATIONS	
Scan Type	Color Contact Image Sensor	
Scan Speed	Black/Color: Up to 36 ppm (one-sided, plain paper, Letter)††	Black/Color: Up to 26ppm (one-sided, plain paper, Letter)††
Scan Resolution	Up to 600 x 600 dpi (Optical); 9600 x 9600 dpi (Interpolated)	
Output File Formats	JPEG, TIFF, PDF, Compact PDF, PDF (OCR), PDF Encrypted (Opt), PDF Digital Signature (Opt.)	
Scan Features	Scan to USB, Push (Scan to PC) and Pull Scan*, Scan to E-mail, Scan to Network Folder, Scan to SMB	
Mobile Scan	Canon Mobile Scanning for Business (for iOS and Android)	
	FAX SPECIFICATIONS	
Modem Speed	Up to 33.6 Kbps*	
Fax Resolution	Up to 406 x 391 dpi (Super Fine)	
Fax Memory	Up to 512 Sheets**	
Speed Dialing	300 Coded Dials	
Group Dialing	199 Destinations	
Sequential Broadcasting	310 Destinations	
PC Fax	Yes (Sending Only)	
Fax Forwarding	Yes (Fax→Fax, E-mail, SMB)	
Fax Features	Dual Access, Remote Reception, Distinctive Ring Pattern Detection, Error Correction Mode, Auto Redial Fax Forwarding, Auto Redial, Fax Archive	
	GENERAL SPECIFICATIONS	
Dimensions	20 1/8" (W) x 22 1/4" (D) x 24" (H)	
Weight	94.8 lb.	
Package Weight	99.2 lb.	
Warranty	One-Year Limited Onsite* (Extended warranties available)	
	ENVIRONMENTAL	
Typical Energy Consumption (TEC)	1.2k Wh	0.8k Wh
EPEAT	Silver	
Power Consumption	During Operation: Approx. 500 W Standby: Approx. 30 W Energy Saver: Approx. 1 W (Wired)	During Operation: Approx. 400 W Standby: Approx. 30 W Energy Saver: Approx. 1 W (Wired)
Noise Level:**	During Operation: 51 dB (Sound Pressure) 71.3 dB (Sound Power) During Standby: Inaudible (Sound Pressure) 53 dB or less (Sound Power)	During Operation: 50 dB (Sound Pressure) 68.5 B (Sound Power) During Standby: Inaudible (Sound Pressure) 43 dB or less (Sound Power)
	WHAT COMES IN THE BOX	
	Canon imageCLASS Product, Toner 034 CMYK, Drum Unit 034 CMYK, Waste Toner Box WT-A3, Power Cord, Phone Cable, User Software DVD-ROM Starter Guide, Warranty Card, Canon Drivers	

* Print speeds are based on internal testing. Print and copy speeds may vary, depending on the number of copies selected as well as the settings for size, type, and orientation of paper.

** Based on 20 lb. Bond paper.

*** May vary depending on the output environment.

† Letter-sized, after being restored from Energy Saver mode.

†† Based on Letter-sized scanning at 300 x 300 dpi.

* Scanning with MF800 Series requires TWAIN compliant software scan utility.

• The Public Switched Telephone Network currently supports fax modem speeds of 28.8 Kbps or lower, depending on telephone line conditions. Sending and receiving fax machines need to conform to ITU-T v.34 guidelines.

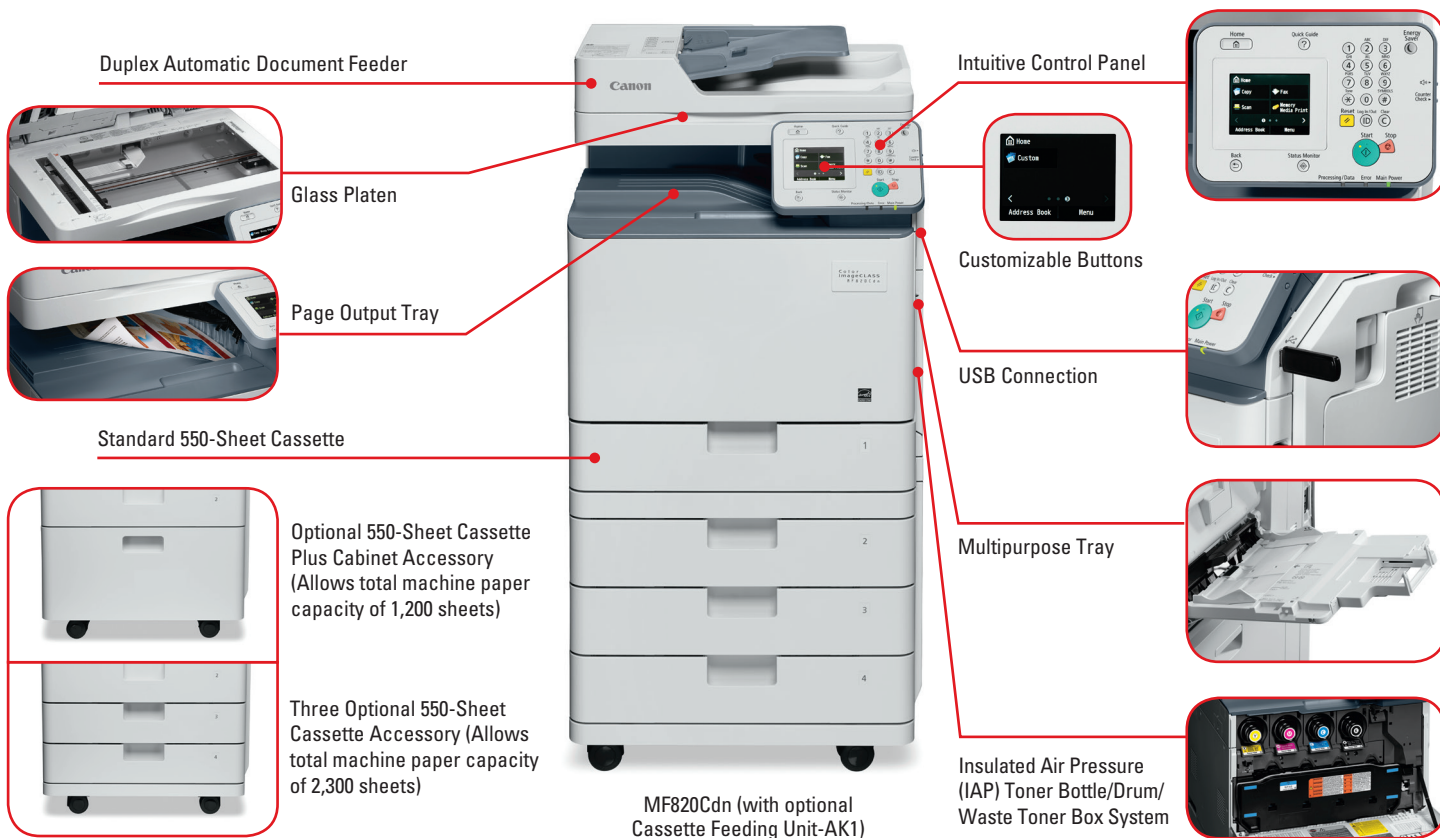
• Based on ITU-T #1 Chart (Standard).

• Warranty program is subject to certain conditions and restrictions. See the warranty card for details.

• Declared noise emission in accordance with ISO 9296.

Color imageCLASS

MF820Cdn / MF810Cdn



MF820Cdn (with optional
Cassette Feeding Unit-AK1)

Printer Ordering Information

Color imageCLASS MF820Cdn	9548B006AA
Color imageCLASS MF810Cdn	9548B001AA

Accessories Ordering Information

Canon Toner 034 Black	Full Yield, 12,000 Sheets ISO/IEC	9454B001AA
Canon Toner 034 Cyan	Full Yield, 7,300 Sheets ISO/IEC	9453B001AA
Canon Toner 034 Magenta	Full Yield, 7,300 Sheets ISO/IEC	9452B001AA
Canon Toner 034 Yellow	Full Yield, 7,300 Sheets ISO/IEC	9451B001AA
Drum Unit 034 Black	Full Yield 32,500 Sheets	9458B001AA
Drum Unit 034 Cyan	Full Yield 34,000 Sheets	9457B001AA
Drum Unit 034 Magenta	Full Yield 34,000 Sheets	9456B001AA
Drum Unit 034 Yellow	Full Yield 34,000 Sheets	9455B001AA
Waste Toner Box WT-A3	Full Yield 30,000 Sheets	9549B002AA
CST. Feeding Unit-AK1 US	550 x 3 Cassette (1,650-Sheet Capacity)	9580B003AA
CST. Feeding Unit-AJ1 US	550 x 1 Cassette + Cabinet (550-Sheet Capacity)	9579B003AA

eCarePak New Tier 201Y	eCarePak 1-Year Onsite	5707B058AA
eCarePak New Tier 202Y	eCarePak 2-Year Onsite	5707B059AA
eCarePak New Tier 203Y	eCarePak 3-Year Onsite	5707B060AA
eCarePak New Tier 203Y	eCarePak 4-Year Onsite	5707B061AA
Canon Barcode Printing Kit-D1	Software Print Accessory	
Canon Send PDF Security Feature Set-E1	Software Print Accessory	

Learn more about the ENERGY STAR®
program at www.usa.canon.com/energystar

EPEAT is not owned, controlled or operated by the U.S. EPA. None of the EPEAT, the Green Electronics Council or the U.S. EPA endorses or approves Canon products. As an ENERGY STAR® Partner, Canon U.S.A., Inc. has qualified these models as meeting the ENERGY STAR energy efficiency criteria through an EPA-recognized certification body. Canon, imageCLASS, and the GENUINE logo are registered trademarks of Canon Inc. in the United States and may also be registered trademarks or trademarks in other countries. The Mopria logo is a trademark of Mopria Alliance, Inc. Apple, AirPort, iPad, iPhone, iPod touch, Mac, Mac OS, and Time Capsule are registered trademarks of Apple Inc. AirPrint is a trademark of Apple Inc. App Store™ is a servicemark of Apple Inc. iOS is a trademark or registered trademark of Cisco in the U.S. and other countries and is used under license. Microsoft, Windows, Windows Server, and Windows Vista are either registered trademarks or trademarks of Microsoft Corporation in the United States and/or other countries. Wi-Fi and the Wi-Fi Certified logo are registered trademarks of the Wi-Fi Alliance. All other referenced product names and marks are trademarks of their respective owners. Specifications and availability subject to change without notice. Not responsible for typographical errors. Certain images and effects are simulated.
©2015 Canon U.S.A., Inc. All rights reserved.

0191W791
0115-MF820/810SS-10M-LSP



1-800-OK-CANON
www.usa.canon.com

